

CORAZON



THE EXPERT'S VIEW

CORAZON is a sleek, dynamic Sunseeker featuring five cabins with the owners cabin on the main deck. Two of the lower deck cabins can be configured as kings or twin berths. Equipped with ABT TRAC at rest finn stabilization, ensuring optimal guest comfort. She cruises at 16 knots and reaches a maximum speed of 23. Stern garage keeps tenders and waverunners stowed away. Large one level sundeck with jacuzzi is optimum for dining and sunbathing. Recent major price reduction.

34.14 M / 112'00"

SPECIFICATION

BUILDER	SUNSEEKER
BUILT / REFIT	2012 / 2020
BEAM (M/FT)	7.39 M / 24'03"
DRAFT (M/FT)	2.29 M / 7'06"
HULL MATERIAL	GRP
GROSS TONNAGE	225
ENGINES	2 X MTU 16V2000M94
SPEED	16 KNOTS / 23 MAX
FLAG	MARSHALL ISLANDS
EXTERIOR DESIGNER	SUNSEEKER
INTERIOR DESIGNER	MAURICIO GÓMEZ DE TUDDO
GUEST / STATEROOMS	12 / 5
CREW	7
LOCATION	FORT LAUDERDALE, FL
PRICE	\$4,250,000

CORAZON

MAIN CHARACTERISTICS

Name	CORAZON	
Type	Motor Yacht	
Builder	Sunseeker	
Year	2012	
Refit Year	2020	
Yacht Model	Flybridge	
LOA (M/FT)	34.14M	112'00"
Length COR	33.91M	111'03"
Beam (M/FT)	7.39M	24'03"
Draft (M/FT)	2.29M	7'06"
Gross Tonnage	225GT	
Displacement	147709.72 lbs	
Hull Material	GRP	
Hull Configuration	Modified V-Hull	
Superstructure	GRP	
Decks	Teak over fiberglass	
Flag	Marshall Islands	
Naval Architect	Sunseeker	
Exterior Designer	Sunseeker	
Interior Designer	Mauricio Gómez de Tuddo	
Main Engines	2 X 2,640 HP MTU 16V2000M94	
Speeds	Max: 23 knots Cruising: 16 knots	
Range	2,450nm @ 16 knots	
Guest Accommodation	Accommodates 12 guest in 5 staterooms	
Crew Accommodation	Accommodates 7 crew in 3 cabins	

CORAZON

OVERVIEW

CORAZON is a sleek, dynamic Sunseeker that has been beautifully maintained and is immaculate after having only been privately used till 2022. The yacht is equipped with ABT TRAC at rest fin stabilization, ensuring optimal guest comfort. She cruises at 16 knots and reaches a maximum speed of 23 knots. Since her build in 2012, CORAZON has benefitted from exceptional care and notable upgrades. 2019 - 2020 included fresh topside paint, a new watermaker, and MOH on both generators. 2022 saw a variety of mechanical, digital, and interior soft goods updating including all-new bedding and linens and refinished wood flooring, new water pumps, 5G Wi-Fi/satellite, all-new house batteries, and the addition of all the toys and charter kit, plus so much more.

Her open-plan salon is unique to Sunseeker as there is no partition between the dining and main salon area. The environment is family-style and relaxed, with opposing settees to port and starboard. Her comfortable dining area for 10 is forward of the main sitting area and the large, picture windows allow a constant flow of natural light. CORAZON's welcoming atmosphere is suitable for all types of guests, from friends and couples to multigenerational families.

CORAZON's versatile accommodation configuration welcomes up to 12 guests in five staterooms. With the owner's suite is located on the main deck and features a split-level en-suite bathroom. The forward-facing walk-around king-size bed receives 270 degrees of natural light. There is a 50" TV forward and plenty of drawer and closet space. On the lower deck, guests will find two double cabins, two convertible twin-to-king cabins, and two Pullman berths. CORAZON can accommodate six crewmembers in three upper and lower berth cabins.

The Sunseeker's exterior deck spaces are ideal for entertaining. Her aft deck is uncluttered and can easily be converted to suit the owner's specific use and style. There is no built-in seating, allowing the space to be completely customizable. There is easy access from the aft deck to the swim platform with great water access to hop on and off the tender. CORAZON's most popular hang-out spot is her stunning sundeck. The hard top has an opening skylight for shade or sun exposure when needed. There is a spacious 12-person alfresco dining table, a Jacuzzi, and plenty of sun pads, including a seating area with padded tables that raise and lower to transition from a sunbathing area to a cocktail hour space. CORAZON's foredeck invites guests to lounge in complete privacy on an oversized sun pad.

ACCOMMODATIONS

CORAZON'S interior layout sleeps up to 12 guests in 5 staterooms, including a master suite, 2 double cabins, and 2 double/twin cabins. She is also capable of carrying up to 6 crew onboard to ensure a relaxed luxury yacht experience.

The master stateroom is a spacious split-level master located on the main deck featuring wrap-around windows, king size bed, and two walk-in closets. Forward-facing walk-around king-size bed, 270 degrees of natural light, 50" flat panel tv on the forward bulkhead, full-length dressers, and two walk-in closets. Lower-level full beam en-suite with spacious shower, private WC, large vanity, and storage galore. Privacy and comfort abound!

The two double staterooms include queen size beds and their own ensuite. The two double/twin Staterooms include twins size beds each equipped with a Pullman including a ladder. The perfect sleeping arrangements for families with kids' nannies or parties looking for separate beds. These twins also are convertible to kings. Both staterooms are equipped with their own ensuite. CORAZON'S versatile layout offers multiple sleeping arrangements for all client's needs.

Open and airy and quite unique to the Sunseeker line as there is no partition between the dining and main salon area. A magnificent family-style relaxed environment. Opposing, matching settees to port and starboard.

Crew Accommodations

CORAZON

Four Crew cabins are located forward for a total of six or seven if the Captain is in a couple. Starboard side crew cabin has berths for three. Portside aft has two crew berths and portside forward is a double berth. Each cabin had a head is fitted with shower and wash basin.

Crew lounge is located at the top pf the stairs leading down to the crew cabins.

DINING AREA

- ◆ Table with 8 chairs
- ◆ Game table with 2 chairs that connects to the main dining table for a total of 10 guests for dining.

AFT DECK

Open and easily converted to your specific use and style. None of the seating is built-in, allowing for a variety of options such as; dining table, or aft-facing seating to view all the action happening on the water.

- ◆ Fiberglass deck with teak overlay
- ◆ Sofa
- ◆ Deck chairs
- ◆ Sliding glass door to salon
- ◆ Stairwell to flybridge
- ◆ Hydraulic platform and passarelle control switches
- ◆ Bose stereo speaker in overhead, port, and starboard

SUNDECK/FLYBRIDGE

One of the coolest spots to enjoy with the retractable convertible top offering sun or shade, wet or dry! Dining table for twelve, Jacuzzi tub, sun lounging pad, retractable shade awning, upper helm station, and large settee. Safety gear including hydrostatically released life rafts.

- ◆ Fiberglass deck with teak overlay
- ◆ Dining table with 10 chairs
- ◆ Fiberglass cabinet, port forward with Hoshizaki ice maker, Corian countertop & storage cabinets
- ◆ Jacuzzi
- ◆ Sun pad with cushions, storage, and backrests
- ◆ Floodlight, port, and starboard aft
- ◆ Molded Fiberglass Hardtop with a retractable sunroof

FOREDECK

The foredeck king size sun bed offers privacy and forward face views of the sea. Forward of the sunbed is the ground tackle windlass.

- ◆ Stainless steel safety rails
- ◆ Access to the chain locker
- ◆ Sun pad with cushions, cover, and storage
- ◆ Pioneer stereo speakers, port, and starboard

BEACH CLUB

The submersible swim platform on the transom offers exceptional water access or to hop on and off the tender or water toys.

GARAGE

- ◆ Storge for 61' Castoldi tender and one Yamaha Waverunner
- ◆ Hydraulic transom hatch
- ◆ Cradle with rollers for tender
- ◆ Overhead winch for personal watercraft

CORAZON

- ◆ Winch, forward, for tender

CLASSIFICATION

Flag	Marshall Islands
Port of Registry	Bikini
US Tax Status	US Duty Paid

CONSTRUCTION

Hull Material	GRP
Superstructure Material	GRP
Decks Material	Teak over fiberglass
Paint	Awlgrip
Motor Hull Type	Mono hull
Motor Hull Sub Type	Raised pilot house
Number of Decks	2 (above waterline)

CAPACITIES

Gross Tonnage	225GT	
Net Tonnage	67	
Displacement Tons	124	
Fuel Capacity	21,293 L	5,625 USG
Fresh Water Capacity	4,001 L	1,057 USG
Black Water	4,542 L	1,200 USG

	Speed	Range
Maximum	23 knots	
Cruising	16 knots	2,450 nm

MAIN MACHINERY

Main Engines	2 x MTU 16V2000M94, 2640 HP, 1,939 kW 16 cylinders Max rated 2,450 RPM
Engine Hours (March 2024)	Port: 4,841 Starboard: 4,892 QL1 and QL3 4,000 hour service (September 2020)
Engine Controls	MTU
Exhaust Silencer	220-Volt electric/automatic to compartment manifold
Gear Boxes	Zahnradfabrik Friedrichshafen AG/Ratio:3.478:1/Model#: ZF4650A

GENERATORS & ELECTRICITY

Output/Electricity	Built to US electrical specifications 60 Hz
Generators	2 x Kohler 65EOZD, 65kw generators, 1800 RPM
Generator Hours (March 2024)	Port: 14,666 Starboard: 14,828
Serial Numbers	3023929 / 3023928 Please update hours
Voltage	277/480 3-phase

CORAZON

Number of Cylinders	4
Shore Power Converter	Atlas 75kVA shore power converter
Batteries	4 x 12- volt 8D to house system 4 x 12-volt 8D to engines 12-volt to each engine 2 x 12 -volt to radios 2 x 12-volt to emergency bank 2 x Optima 12-volt batteries
Battery Chargers	Newmar

AUXILIARY MACHINERY

Bow Thruster	American Bow Thruster
Stern Thruster	American Bow Thruster
Thruster Controls	ABT-TRAC bow/stern thruster control
Stabilizers	TracStar digital fin zero speed stabilizer system
Under Water Lights	7 x xenon 100w underwater lights
Fuel Filters	Primary: Racor Secondary: Canister
Bilge Pump	220-Volt electric/automatic to compartment manifold
Firefighting & Bilge Pump	208-volt to (2) stations
Fresh Water Makers	Idromar (1150 g/p/d)
Fresh Water Pressure	24VDC
Black & Grey Water Treatment	Sewage treatment plant interfaced to Tijssen system
AC & Ventilation System	
Air Conditioning	Tropical air with upgraded quiet running AHDC air handlers
Air Compressor	Portable air compressor

NAVIGATION & COMMUNICATION SYSTEMS

NAVIGATION SYSTEMS

Chart Plotter	Time Zero
Magnetic Compass	Ritchie
Auto Pilot	Simrad AP50 autopilot
Rudder Angle Indicator System	Yes
Depth Sounder	Furuno / NavNet
GPS	Furuno / NavNet
Search Lights	ACR Searchlight control

COMMUNICATION SYSTEMS

SAT com	KVH
VHF Radiotelephones	Simrad VHF radio Icom-M/ SimradRS87
Radar Transponders	Furuno / NavNet

DECK MACHINERY & EQUIPMENT

Anchors	2 x 60kg anchors with approx. 330' of chain each
Warping Winch	Muir warping winch, aft deck port and starboard
Anchor Windlass System	2 x Muir 4500 anchor windlasses on foredeck

CORAZON

Bell	12" bell on foredeck
Stainless Steel Cleats	Stern cleat, port and starboard Bow cleat, foredeck, port and starboard
Hawse Eyes	Aft deck, port and starboard Foredeck, port and starboard

SAFETY, SECURITY, & FIRE FIGHTING EQUIPMENT

Security System	
CCTV	X 4
Monitors	MPA CCTV touch screen monitoring system 2 x Two MTU engine displays
Fixed Firefighting System	Seafire FM200 fire system
Firefighting Equipment	Dry Chemical / CO2 portable extinguishers
Alarms	Burglar alarm
Life Rafts	4 x 8 man SOLAS B life rafts (crew of 6 + 10 guests), foredeck 2 x 10-man Survitec life rafts, flybridge, port and starboard
Life Rings	30" life ring with MOB beacon, aft deck, port and starboard 30" life ring, flybridge, port and starboard 30" life ring, garage
Lifejackets	Adult type I & II
EPIRB	ACR
Flares and Signals	Orion

GALLEY & LAUNDRY EQUIPMENT

MAIN GALLEY EQUIPMENT

Cooking Equipment	2 x Miele ovens Miele 5-burner stovetop Miele microwave oven
Refrigeration/Freezer	2 x Sub-Zero freezer drawers Sub-Zero refrigerator with two drawers 4 x Sub-Zero refrigerated drawers
Flybridge	2 x Waeko fridges 2 x Miele Electric grills 2 x Mobi cool under-counter refrigerators
Wine Storage	2 x Sub-Zero wine coolers
Main Laundry Equipment	Whirlpool clothes washer LG clothes dryer

TENDERS & TOYS

Tenders	Castoldi Jet Tender 16', model 4JH4-HTE, kW 73.6
Waver Runner	Yamaha Waverunner (2019)

CORAZON

EXCLUSIONS

A detailed exclusion list will be provided pursuant to contract.

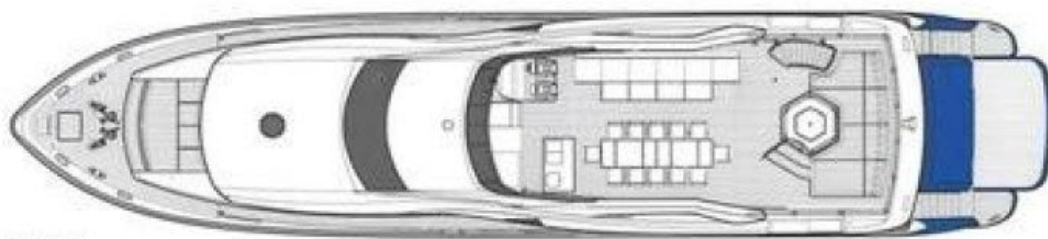
All speeds, capacities, consumption, hours, measurements, etc. are approximate or estimated. Specifications provided for information only as particulars herein obtained are from sources available but are not guaranteed. Remarks and other statements may be personal opinions and may not be relied upon. Interested parties should instruct his/her agent/supervisor to check all details for accuracy.

CORAZON

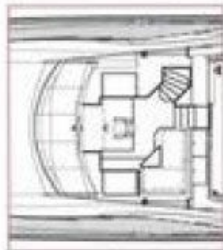
GENERAL ARRANGEMENT



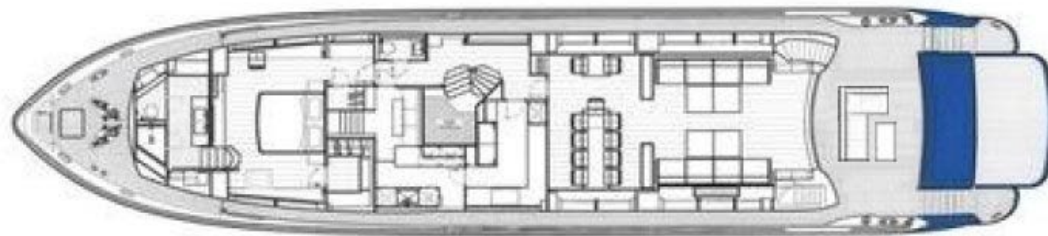
PROFILE



SUPERBRIDGE



WHEELHOUSE



MAIN DECK



LOWER DECK